

CHRONO

GEANT

USER MANUAL



Manufacture Suisse d'Horlogerie depuis 1887



The Eberhard & Co. watch manufactory was founded by Georges-Emile Eberhard at La Chaux-de-Fonds back in 1887. Ever since, the venture has specialised in the making of chronographs.

In this capacity, it has attained a highly respected position in the world of high-grade watches. With the introduction, at a later stage, of sportively elegant watches it has furthermore augmented this status of the Eberhard & Co. brand name.

Eberhard's success story is backed by consistent deployment of advanced technology, meticulous craftsmanship and, not least, by observing that long tradition of superior workmanship which has made Swiss watchmaking a household name.

Today, with well over a century gone by, watches by Eberhard & Co. continue to stand for that high-grade quality and those excellent virtues which will please even the most demanding of connoisseurs.



CHRONO 4 GEANT

Chrono 4 Géant represents the evolution of the historic CHRONO 4, the first and only chronograph in the history of watchmaking with 4 in-line counters (patented), an evolution which demonstrates a strong decisive character and unprecedented dynamism.

The sporty vocation of Chrono 4 Géant is evident in its sizeable dimensions, its water-resistance to 200m and the contrast created by the red details on the dial.

Its particular feature is the impact of the ongoing research into tri-dimensioning and compactness, as illustrated by the raised indexes on the dial, set against the numeric references engraved on the bezel, or the surprising flange with its tachometric scale, or again the vertically sculpted rubber strap.

Eberhard & Co.'s century-long passion for watchmaking reveals its utterly impetuous and irresistible side with a chronograph of indomitable personality, yet perfect in every detail.

INFORMATION REGARDING THE INTERNATIONAL GUARANTEE

We hereby guarantee your Eberhard & Co. watch against any defects in manufacture or materials for a period of 24 months, subject to normal conditions of use.

This guarantee does not cover:

- damage caused by improper technical handling or by shocks
- wear to the strap, glass, crown or any other part during normal watch use.

For technical revisions of the Eberhard & Co. "Chrono 4 Géant" model please contact only technical service facilities authorised by Eberhard & Co. The eventual shipping and insurance charges are to be paid by the owner.

We recommend to have the movement checked and overhauled every two years.

For our part, we shall always endeavour to give full satisfaction.



- A Screw pushbutton to start and stop the chronograph
- A1/B1 Security ring
- B Pushbutton for setting to zero all hands of the chronograph
- C Winding crown
- D Hours-hand of the watch
- E Minutes-hand of the watch
- F Small continuous seconds-hand

- G Centre seconds-hand of the chronograph
- H Small minutes-hand of the chronograph
- I Small hours-hand of the chronograph
- L 24-hours indicator
- M Date
- N Tachometer scale
- O Graduated minutes scale

FEATURES

Mechanical chronograph with automatic winding and an exclusive device by Eberhard & Co. in the form of four counters aligned in one row. The crown is screwed-in and water-resistant, the sapphire glass is anti-reflective, the caseback is fixed by 8 screws. The special sword-shaped hands and the “appliques” hours indexes are luminescent to allow read-off when it is dark.

The collection is available in the following version:

- Case in stainless steel with rubber strap
- Water-resistant down to 200m

READING THE DIAL

On the “Chrono 4 Géant” dial there are 4 counters, arranged in one row, having the following functions:

- Small minutes-hand of the chronograph H
- Small hours-hand of the chronograph I
- 24-hours indicator L
- Small continuous seconds-hand F

The chronograph seconds are displayed by the centre-hand G

The calendar is positioned at 12 o'clock M

DISTINCTIVE FEATURES OF THE MOVEMENT

Chronographic automatic movement, 28,800 vibrations per hour

- Micrometric regulator
- “Glucydur” balance for regulating the movement (the inoxidizable alloy of which has a low coefficient of expansion), combined with a self-compensating spiral; it is hence insensitive to temperature fluctuations and ensures an optimum regulation of the movement
- Number of rubies: 37
- 42-hours power-reserve under optimum winding conditions

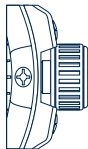
Exclusive device by Eberhard & Co. with counters arranged in a row

- Number of rubies: 16

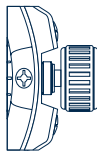
OPERATING THE CROWN



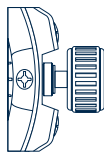
POS. A - Screwed-in crown, water-resistance guaranteed.



POS. B - HAND-WINDING OF THE WATCH – To unscrew the crown turn it counter-clockwise. When it is unscrewed, turn it clockwise to transmit the manual charge to the movement. If your "Chrono 4 Géant" has not been worn for some time, the movement has to be wound manually, in order to obtain immediately a sufficient power-reserve and to ensure accurate working of the watch.



POS. C - RAPID DATE-SETTING – Pull the crown to the first catch. Turning the crown counter-clockwise, you can then set desired date.



POS. D - TIME SETTING – To set the time (hours and minutes), pull the crown to the second catch.

IMPORTANT

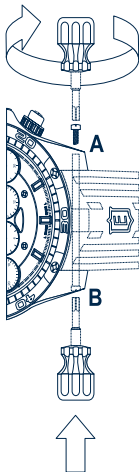
To set back the crown, push it lightly against the watch case while turning it clockwise until it is fully screwed in again.

INSTRUCTIONS FOR REPLACING THE STRAP

If the strap requires replacement, you are advised to consult one of the after-sales centres of Eberhard & Co. or a qualified watchmaker because special tools are needed for this work.

The assembly system consists of the following parts:

- A 1 self-locking screw with cruciform head
- B 1 threaded stud with cruciform screw head



NOTE: the screws have been treated with PVD and so in order to protect them, we recommend that the following instructions be adhered to:

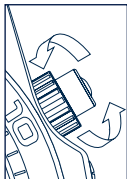
For the correct removal of the strap, it is necessary to work on screw A, preferably using two special screwdrivers or two screwdrivers with correctly shaped blades; in any case, one of the two must be fixed in a vice and used to block pin B, and the other to unscrew the opposing screw A in an anticlockwise direction.

When screw A has been removed, the pin B can be pulled out by pressing it in the opposite direction, releasing the strap in this way.

From this point on, the watchstrap is assembled in reverse order.

IMPORTANT: As the screws are self-locking, it is normal to notice a certain resistance during the last turns when screwing them in. To close the screws properly, they must be screwed in completely up to the last turn.

PUSHBUTTONS



In order to be able to operate both pushbuttons and access the chronograph functions, it is necessary to unscrew completely the safety ring at the base of the pushbutton (A1/B1), turning it anticlockwise.

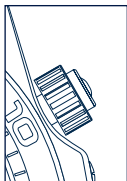
Make sure pushbuttons are always pressed in the following order:

A: Start

A: Stop

B: Return to zero

Abide by this sequence quite severely so as to preclude damage to the mechanism.



Before immersion or coming into contact with water, it is recommended to screw the protection bezel down completely, thus avoiding any involuntary operation of the pushpieces, which could endanger the water-resistance of the watch.

ROTATING BEZEL

On the unidirectional rotating bezel there is a luminous pointer that indicates the start of the graduated minutes scale, which is useful for calculating the time of immersion, and 6 zones in low relief, which facilitate traction during its rotation.

OPERATING INSTRUCTIONS FOR THE CHRONOGRAPH

Press the pushbutton A to start the chronograph mechanism. Press the pushbutton a second time to stop the chronograph mechanism. You can now read on the counters how many seconds G, minutes H and hours I have elapsed. Press the pushbutton again and the chronograph will restart from the intermediate stop. To return to zero, the chronograph must be in the stop position. Press the second push-button B and all hands will return to zero. You are advised not to leave the chronograph mechanism operating continuously.

TACHOMETER SCALE

The tachometer scale N on the flange provides the data needed for metering the speed of a vehicle over a distance of 1,000 metres.

The moment the vehicle passes the first reading marking the beginning of said 1,000m distance, activate the hand G of the chronograph to bring it to a stop the moment the vehicle passes the second reading mark. Said hand G will now indicate the average speed reached in km/h in tune with the tachometer scale.

Example: when one kilometre is covered within 45 seconds, the average speed displayed by the centre seconds-hand G on the tachometer scale will be tantamount to a speed of 80 km/h.

CARE OF WATERPROOF WATCHES

It is recommended to verify the position of the crown and the protection ring of the push-pieces before each immersion. After use in sea water, rinse the watch in fresh water.

Do not use the crown and push-pieces when the watch is wet. We strongly recommend that you let check the water-resistance by a qualified technical service facility at least once a year, or in any case before intensive use, and to have the gaskets replaced if necessary.



www.eberhard-co-watches.ch